

CONTRACTOR WORKSHOP

The Basics of Erosion and Sediment Control on Construction Sites

Tuesday, March 25
7:30 – 9:00 am

Ivy Tech Community Center

Speaker: Tim Stottlemyer,
Noblesville MS4 Program Manager

— BREAKFAST PROVIDED —

As the construction season starts and the economy picks up, we want to see construction projects move from start to finish smoothly. Making sure erosion and sediment control practices are installed correctly, inspected, and maintained will keep your project on track by avoiding costly and time-consuming repairs and enforcement actions.

As a former contractor and current Stormwater Manager, our speaker has experienced the stormwater rules from both sides. He will provide real-world experience in presenting common practices and basic expectations for erosion and sediment control.

**The workshop is free,
but registration is
required by March 20.**

For more information or to register, please call 574-533-4383 ext. 3 or email eric.kurtz@in.nacdnet.net.

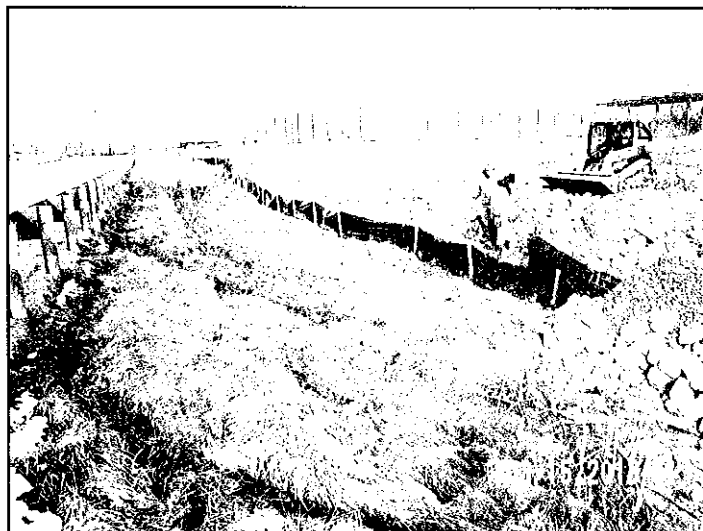
More information will
also be available at
www.stormwaterelkco.org.

Winter Won't Last Forever - How to Prepare for the Coming Melt

The past few months have been very cold and snowy with infrequent times of thawing. At the time of this writing our area has anywhere from a foot to a foot and a half of snow on the ground (courtesy of www.cocorahs.org) and it is only a matter of time before warmer temperatures and rain return and the snow begins to melt.

The question then is this "What needs to be done to prepare a construction site for the spring thaw?" The first thing is to continue conducting weekly site inspections to identify any erosion or sediment control issues that have appeared over the winter months (e.g. damaged silt fence, lost inlet protection measures, or sediment filled basins). Secondly, fix any erosion or sediment control issues identified during a site inspection that can be installed even if the ground is frozen or snow covered (e.g. wattles, mulch, berms, etc.). Third, remove as much accumulated sediment from behind or deposited within different sediment control measures. Finally, even with preparation for the spring thaw it is possible the erosion and sediment control measures in place will still be overwhelmed so it is important to continue weekly inspections and inspections within one business day after a 0.5 inch rain event until all disturbed areas are stabilized.

Remember seeding can be done even when the ground is frozen. The practice is called Frost Seeding and can be found on pages 41 to 45 in Chapter 7 of the Indiana Stormwater Quality Manual (www.in.gov/idem/4899.htm). Don't forget to use some type of temporary mulch cover along with the seed.



Construction crew members fixing issues with sediment control measures on a construction site to prevent runoff from impacting offsite locations.